

A.F. COLAFELLA & Associates Pty Ltd

Consulting Structural & Civil Engineers
3/178 Boronia Road, Boronia 3155

ACN 008 296 399
Telephone: (03) 9762 6466
Fax: (03) 9761 1766

Project	ALUMINIUM BOX TRUSS	Page:	1
	138 - 146 BROWNS RD, NOBLE PARK	Ref:	4682
Client	BROWNS PRECISION WELDING	Designed:	G.N.
		Date:	Jul 03

400 mm ALUMINIUM BOX COLUMN

SAFE LOAD CHART



HEIGHT (metres)	ALLOWABLE TOTAL AXIAL LOAD
6	7.5 Tonnes
7	7.5 Tonnes
8	7.5 Tonnes
9	7.5 Tonnes
10	7.5 Tonnes

NOTES:

- 1.- ABOVE LOADS TAKEN FROM COMPUTATIONS & COMPUTER ANALYSIS CARRIED OUT IN ACCORDANCE WITH A.S. 1664 - ALUMINIUM STRUCTURES CODE AND A.S. 4100 - 1998 STEEL STRUCTURES CODE
- 2.- ABOVE LOADINGS ARE GOVERNED BY SUPPORT FRAME CAPACITY.
- 3.- ABOVE LOADINGS ARE BASED ON INTERNAL USEAGE ONLY
I.E. WIND LOADS NOT CONSIDERED
- 4.- ALL MEMBERS CONSTRUCTED FROM GRADE 6061-T6 ALUMINIUM ALLOY
COUPLERS FROM GRADE 2011 - T6 ALUMINIUM ALLOY
SUPPORT FRAME GRADE 350 STEEL
- 5.- ABOVE TOTAL ALLOWABLE LOADS TO BE APPLIED EQUALLY OVER
EACH VERTICAL LEG.
- 6.- MEMBER TO BE CONNECTED TOGETHER USING 16 ϕ CASE HARDENED STEEL
LOCKING PIN THROUGH FABRICATED ALUMINIUM COUPLERS
- 7.- TOP OF BOX COLUMN TO BE LATERALLY RESTRAINED TO SITE
ENGINEER'S APPROVAL.
- 8.- ALL WELDS TO ALUMINIUM MEMBERS TO BE MIN. 5mm FILLED WELDS
FILLER ALLOY 5356
- 9.- ALL WELDS TO STEEL MEMBERS TO BE MIN. 6mm G.P. C.F.W.
- 10.- ASSEMBLED COLUMN TO BE SUPPORTED ON TOWER BASE AS
ILLUSTRATED ON DWG. No. 001-B PREPARED BY BROWNS WELDING P/L
- 11.- TOWER BASE TO BE SUPPORTED ON GROUND TO SITE ENGINEER'S APPROVAL



A.F. COLAFELLA

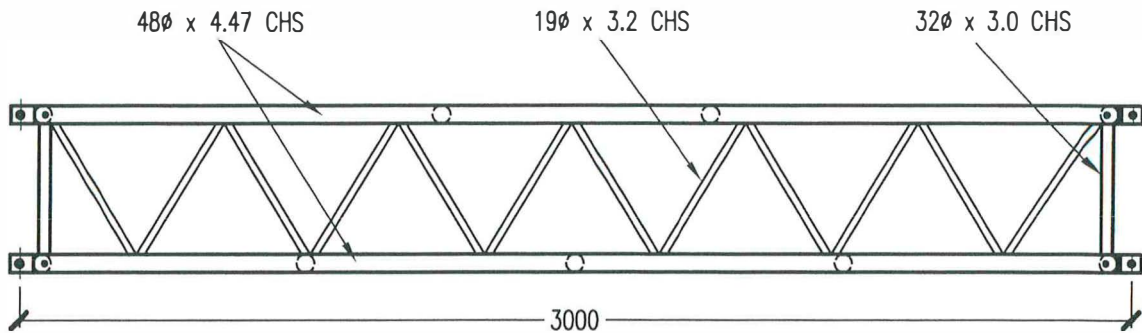
& Associates Pty Ltd ACN 008 298 399

Consulting Structural & Civil Engineers
3/178 Boronia Road, Boronia 3155

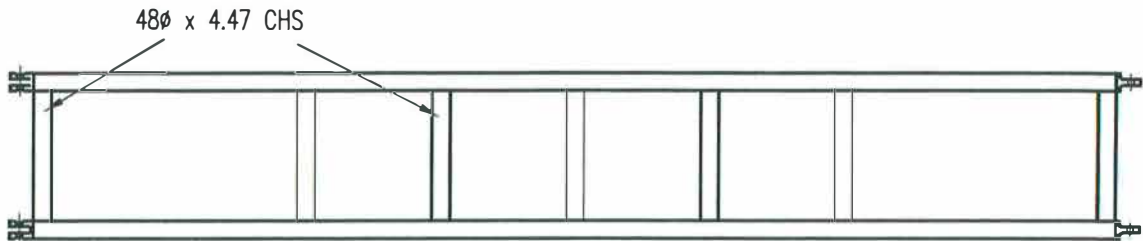
Telephone: (03) 9762 6466
Fax: (03) 9761 1766

Project	ALUMINIUM BOX TRUSS	Page:	2
	138 - 146 BROWNS RD, NOBLE PARK	Ref:	4682
Client	BROWNS PRECISION WELDING	Designed:	G.N.
		Date:	Jul 03

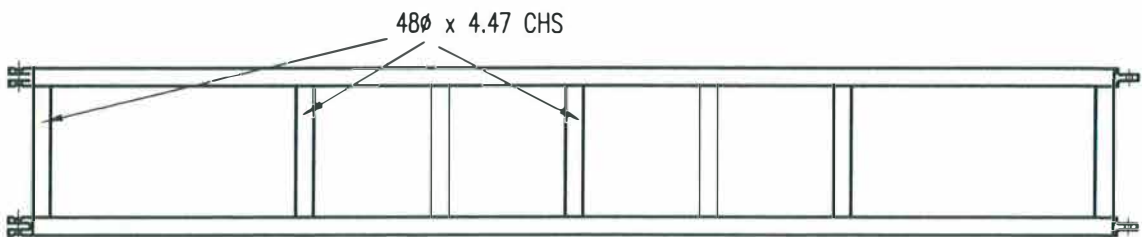
NOTES: ALL MEMBERS ALUMINIUM GRADE 6061 T6 ALLOY
6 CFW THROUGHOUT FILLER ALLOY 5356



SIDE ELEVATION



TOP VIEW



BOTTOM VIEW

A.F. COLAFELLA

& Associates Pty Ltd

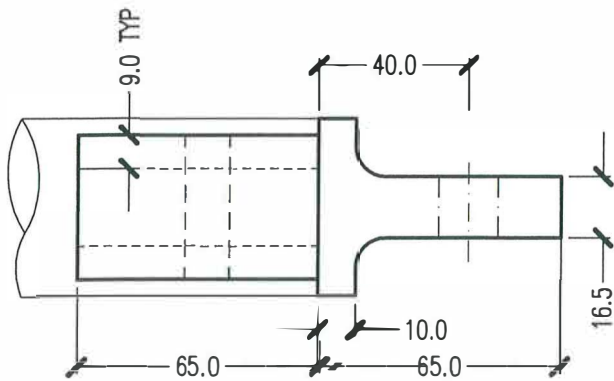
ACN 006 298 399

Consulting Structural & Civil Engineers
3/178 Boronia Road, Boronia 3155

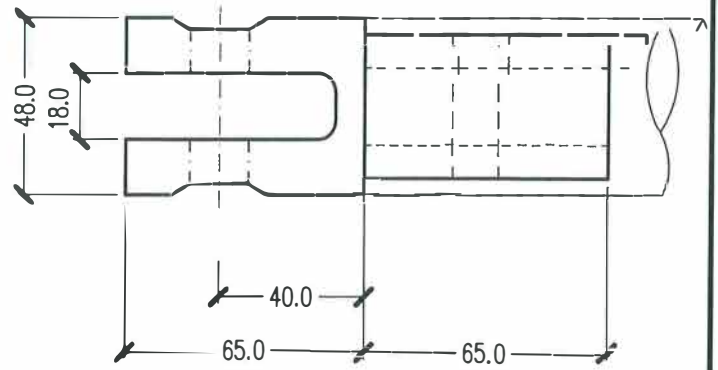
Telephone: (03) 9762 6466
Fax: (03) 9761 1766

Project	ALUMINIUM BOX TRUSS	Page:	3
	138 - 146 BROWNS RD, NOBLE PARK	Ref:	4682
Client	BROWNS PRECISION WELDING	Designed:	G.N.
		Date:	Jul 03

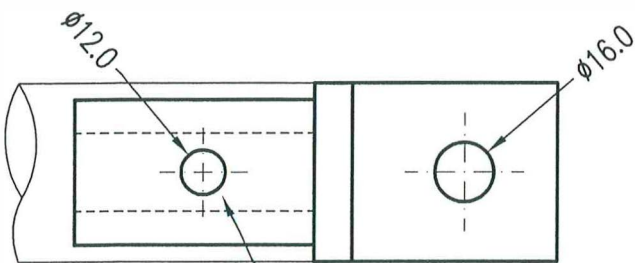
NOTE: ALUMINIUM GRADE 2011 - T6 FOR COUPLERS.



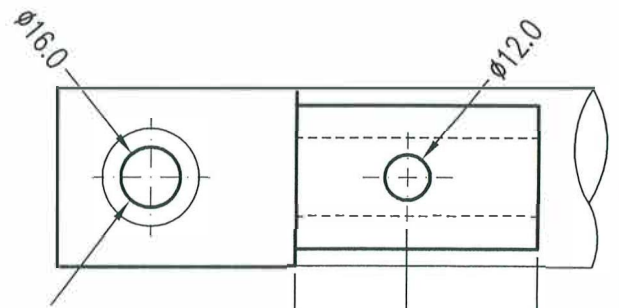
COUPLERS EX 48 SOLID
ALLOY ZOLL



COUPLERS TOP VIEW



COUPLERS FIXED TO CORD VIA
12mm ROLLPIN (CASE HARDENED
STEEL)



INSERT 16mm LOCKING PIN
(CASE HARDENED STEEL)

COUPLERS SIDE VIEW